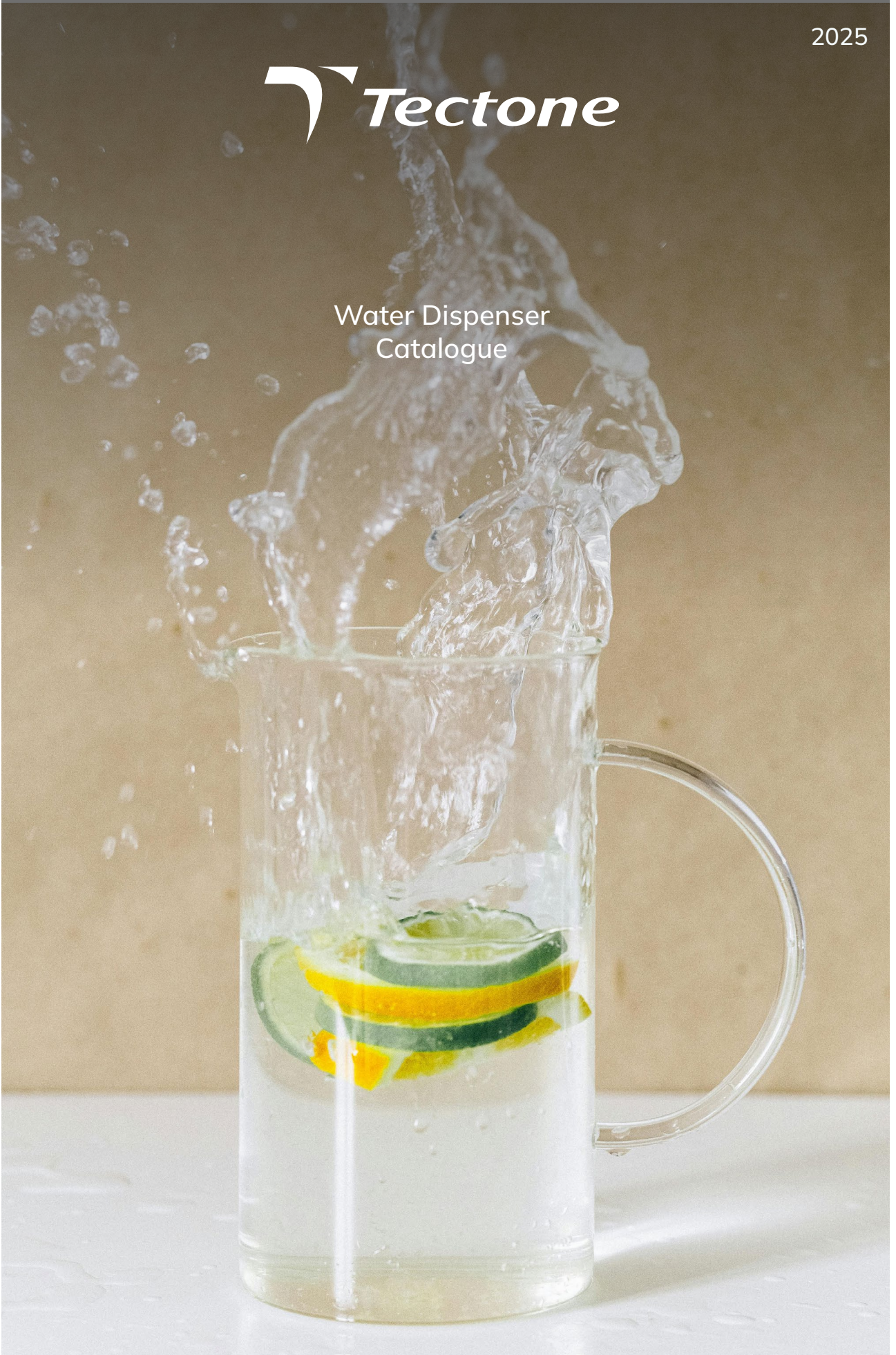


2025



Water Dispenser  
Catalogue





# Welcome to Tectone



Welcome to Tectone, where innovation meets legacy. Embarking on one of Türkiye's most ambitious standalone projects, we've set out to redefine the home appliance manufacturing sector. Starting from scratch, Tectone carries the weight of a grand vision - to transform homes globally with a full range unparalleled products. Our endeavor isn't just about scale or sophistication; it's about reshaping everyday experiences. And, while our journey might be new, our foundation is robust, backed by Can Holding, one of Türkiye's paramount corporate giants.

Dive in, and discover the Tectone difference.

- **2,000,000 m2** total indoor space (in 3 different locations)
- Adding value with **14.000+** team members all around globe
- **44 million** units production capacity (annual)
- **Worldwide** markets

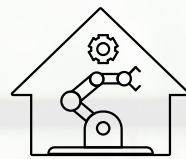


## What We Offer?

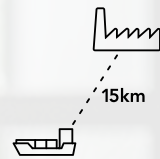
Tectone delivers unparalleled efficiency, wide product range, and assured quality in home appliance manufacturing. Partner with us for a seamless, optimized business experience.



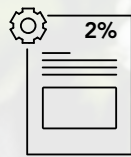
Wide Product  
Range from  
Single Entity



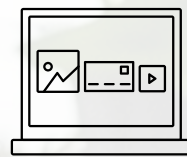
Comprehensive  
In-house  
Manufacturing



Logistic Cost  
Advantage



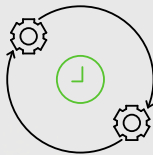
2% FoC Spare Parts  
of Total Invoice  
Amount (Worldwide)



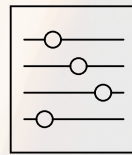
OEM & ODM  
Digital Design  
Marketing Support



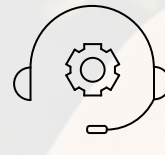
Optimized Quality  
Assurance



Optimized Lead Time  
Guarantee



Product Configuration  
Freedom



Strong After Sales  
Support

Work with Us!





## Water Dispensers



**Product Family** 7

- Water Dispenser Types
- Top Load Dispenser
  - Bottom Load Dispenser
  - Water Purifier

**Features** 9



## Product Family



# Water Dispenser Types

## Top Load Dispensers

**Top Load:**  
Hot - Cold



- Cold Water Tank Capacity: 3L
- Hot Water Tank Capacity: 1.1L
- Cold Water Temperature: 6 - 10°C
- Hot Water Temperature: 85 - 95°C
- Warm Water Option: No
- Faucet Quantity: 2 in 1
- 310 x 360 x 860 mm
- 230 pcs. Shrink (20DC)
- 552 pcs. Shrink (40HC)
- 620 pcs. Shrink (86m³ Truck)

**Top Load:**  
Lukewarm - Cold



- Cold Water Tank Capacity: 3L
- Cold Water Temperature: 6 - 10°C
- Warm Water Option: Yes
- Faucet Quantity: 2 in 1
- 310 x 360 x 860 mm
- 230 pcs. Shrink (20DC)
- 552 pcs. Shrink (40HC)
- 620 pcs. Shrink (86m³ Truck)

**Snow SS700:**  
Hot - Cold



- Cold Water Temperature: 6 - 10°C
- Hot Water Temperature: 85 - 95°C
- Hot Water Capacity: 0,76L
- Cold Water Capacity: 3.2L
- Faucet Quantity: 2
- 268 x 300 x 855 mm
- 224 pcs. Shrink (20DC)
- 462 pcs. Shrink (40DC)
- 720 pcs. Shrink (86m³ Truck)

**Barus SS200:**  
Hot - Cold



- Cold Water Temperature: 6 - 10°C
- Hot Water Temperature: 85 - 95°C
- Hot Water Capacity: 0,76L
- Cold Water Capacity: 3.2L
- Faucet Quantity: 2
- 268 x 300 x 855 mm
- 224 pcs. Shrink (20DC)
- 462 pcs. Shrink (40DC)
- 720 pcs. Shrink (86m³ Truck)

**Rosso SS500:**  
Hot - Cold



- Cold Water Temperature: 6 - 10°C
- Hot Water Temperature: 85 - 95°C
- Hot Water Capacity: 0,76L
- Cold Water Capacity: 3.2L
- Faucet Quantity: 2
- 268 x 300 x 855 mm
- 224 pcs. Shrink (20DC)
- 462 pcs. Shrink (40DC)
- 720 pcs. Shrink (86m³ Truck)

**Flayer SS600:**  
Hot - Cold



- Cold Water Temperature: 6 - 10°C
- Hot Water Temperature: 85 - 95°C
- Hot Water Capacity: 0,76L
- Cold Water Capacity: 3.2L
- Faucet Quantity: 2
- 268 x 300 x 855 mm
- 224 pcs. Shrink (20DC)
- 462 pcs. Shrink (40DC)
- 720 pcs. Shrink (86m³ Truck)

**Tron:**  
Hot - Cold



- Cold Water Temperature: 6 - 10°C
- Hot Water Temperature: 85 - 95°C
- Hot Water Capacity: 0,76L
- Cold Water Capacity: 3.2L
- Faucet Quantity: 3
- 310 x 310 x 970 mm
- 224 pcs. Shrink (20DC)
- 462 pcs. Shrink (40DC)
- 592 pcs. Shrink (86m³ Truck)

## Bottom Load Dispensers

### Bottom Load: Hot - Lukewarm - Cold



- Cold Water Tank Capacity: 3L
- Hot Water Tank Capacity: 1.1L
- Cold Water Temperature: 6 - 10°C
- Hot Water Temperature: 85 - 95°C
- Warm Water Option: Yes
- Faucet Quantity: 3 in 1
- 310 x 360 x 1040 mm
- 192 pcs. Shrink (20DC)
- 462 pcs. Shrink (40HC)
- 516 pcs. Shrink (86m³ Truck)

### Bottom Load: Lukewarm - Cold



- Cold Water Tank Capacity: 3L
- Cold Water Temperature: 6 - 10°C
- Warm Water Option: Yes
- Faucet Quantity: 2 in 1
- 310 x 360 x 1040 mm
- 192 pcs. Shrink (20DC)
- 462 pcs. Shrink (40HC)
- 516 pcs. Shrink (86m³ Truck)

## Water Purifiers

### Hot - Lukewarm - Cold



- Cold Water Tank Capacity: 3L
- Hot Water Tank Capacity: 1.1L
- Cold Water Temperature: 6 - 10°C
- Hot Water Temperature: 85 - 95°C
- Warm Water Option: Yes
- Faucet Quantity: 3 in 1
- 310 x 360 x 1040 mm
- 192 pcs. Shrink (20DC)
- 462 pcs. Shrink (40HC)
- 516 pcs. Shrink (86m³ Truck)

### Snow Pure SS783: Hot - Cold



- Cold Water Capacity: 3.2L
- Hot Water Capacity: 0,76L
- Cold Water Temperature: 6 - 10°C
- Hot Water Temperature: 85 - 95°C
- Water Tank Capacity: 7.1L
- Faucet Quantity: 2
- 268 x 300 x 1025 mm
- 224 pcs. Shrink (20DC)
- 462 pcs. Shrink (40DC)
- 720 pcs. Shrink (86m³ Truck)

### Barus Pure SS203: Hot - Cold



- Cold Water Capacity: 3.2L
- Hot Water Capacity: 0,76L
- Cold Water Temperature: 6 - 10°C
- Hot Water Temperature: 85 - 95°C
- Water Tank Capacity: 7.1L
- Faucet Quantity: 2
- 268 x 300 x 1025 mm
- 224 pcs. Shrink (20DC)
- 462 pcs. Shrink (40DC)
- 720 pcs. Shrink (86m³ Truck)



### Rosso Pure SS505: Hot - Cold



- Cold Water Capacity: 3.2L
- Hot Water Capacity: 0,76L
- Cold Water Temperature: 6 - 10°C
- Hot Water Temperature: 85 - 95°C
- Faucet Quantity: 2
- 268 x 300 x 1025 mm
- 224 pcs. Shrink (20DC)
- 462 pcs. Shrink (40DC)
- 720 pcs. Shrink (86m³ Truck)

### Flyer Pure SS602: Hot - Cold



- Cold Water Capacity: 3.2L
- Hot Water Capacity: 0,76L
- Cold Water Temperature: 6 - 10°C
- Hot Water Temperature: 85 - 95°C
- Water Tank Capacity: 7.1L
- Faucet Quantity: 2
- 268 x 300 x 1025 mm
- 224 pcs. Shrink (20DC)
- 462 pcs. Shrink (40DC)
- 720 pcs. Shrink (86m³ Truck)

## Water Dispenser Features



### Easy Grip Handle

Designed for easy access, the bottom door handle ensures easy opening and closing.



### Large Drip Tray

A large drip tray minimizes spills and reduces the need for frequent emptying.



### Water Level Indicator

The water level indicator lets you easily monitor the remaining water, ensuring timely refills.



### Child Safety Lock

The child-safety lock ensures peace of mind by preventing accidental hot water spills.



### Nightlight

The integrated nightlight ensures effortless operation in the darkest spaces.

## Top & Bottom Load Features



### Top-Loading Water Dispenser

Designed with a convenient top-loading system, making it easy to monitor water levels at a glance.



### Empty Bottle Warning

The empty bottle warning alerts you when it's time to replace the bottle, ensuring you never run out of water unexpectedly.



### Bottom-Loading Water Dispenser

Make life easier with a bottom-loading water cooler that eliminates the need to lift heavy bottles.



### Stainless Steel Water Tank

The durable stainless steel water tank ensures long-lasting performance while maintaining the purity and taste of your water.

## Temperature Settings



### Hot-Cold Water Temperature

Offering both chilled and hot water, our dispenser meets your needs for refreshing hydration or cozy comfort.



### Lukewarm-Cold Water Temperature

With options for crisp cold or room temperature water, this dispenser is ideal for everything from chilled refreshments to beverages at the perfect warmth.



### Hot-Lukewarm-Cold Water Temperature

Whether you prefer chilled, room-temperature, or hot water, our dispenser offers all three options to suit your needs for any drink.





**HQ**

Mehmet Akif Mahallesi Bahariye Caddesi  
Çam Sokak No:51/5 İkitelli  
K.Çekmece / İstanbul,  
TÜRKİYE  
+90 (212) 692 30 00

**Çerkezköy Factory**

Karaağaç, 8. Sk. No: 8, 59510 Kapaklı  
Tekirdağ,  
TÜRKİYE  
+90 (282) 758 13 86

**Mersin Factory**

Organize Sanayi Bölgesi Tarsus  
Mersin,  
TÜRKİYE  
+90 (324) 676 46 46

**Lüleburgaz Factory**

Evrensekiz Cd., No: 7/1, 39750 Sakızköy  
Lüleburgaz / Kırklareli,  
TÜRKİYE  
+90 (212) 692 30 00

[www.tectone.com.tr](http://www.tectone.com.tr)

All designs and images in this catalog are the exclusive property of Tectone. We reserve the right to modify technical data, design, and colors of individual appliances, and all other information contained within this brochure without notice. Due to variables in the reproduction process, the colors of actual products may vary slightly from those depicted. Unauthorized use, reproduction, or distribution of these designs and images is strictly prohibited. All rights reserved.



Empower Every Home.

